

Trustees Report

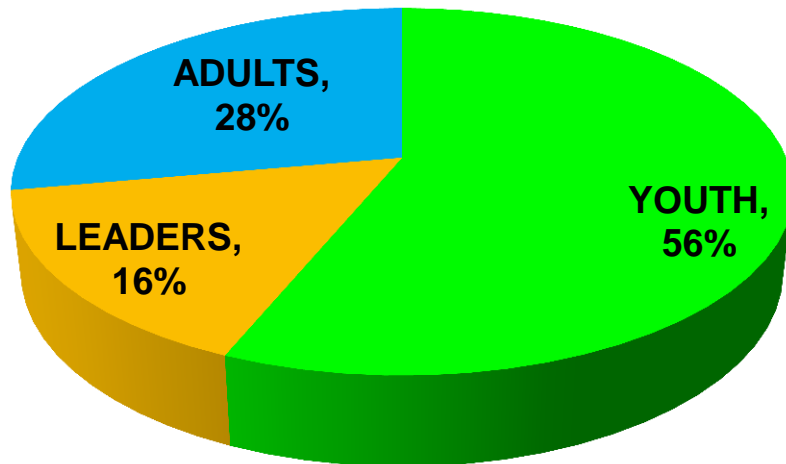


For the year ended 31 March 2015

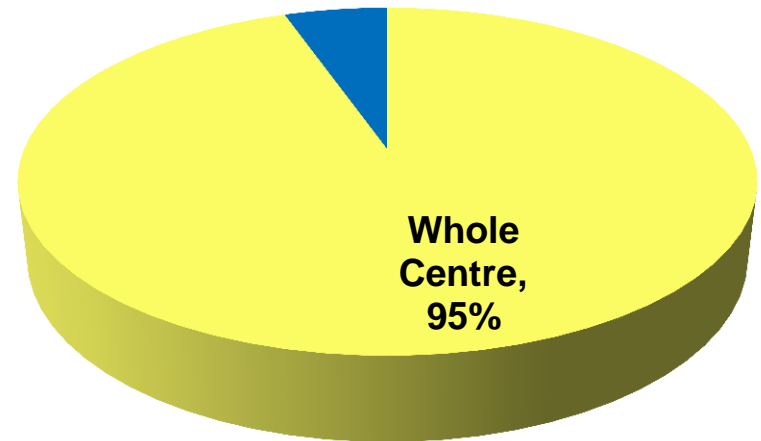
Review of business

- 74 bookings taken (96 last year)
- 9 new members (304 total)
- Utilisation
 - 65 bookings for 4497 beds
 - 41% utilisation (37 % last year)
 - 18% from Staffordshire

Utilisation breakdown

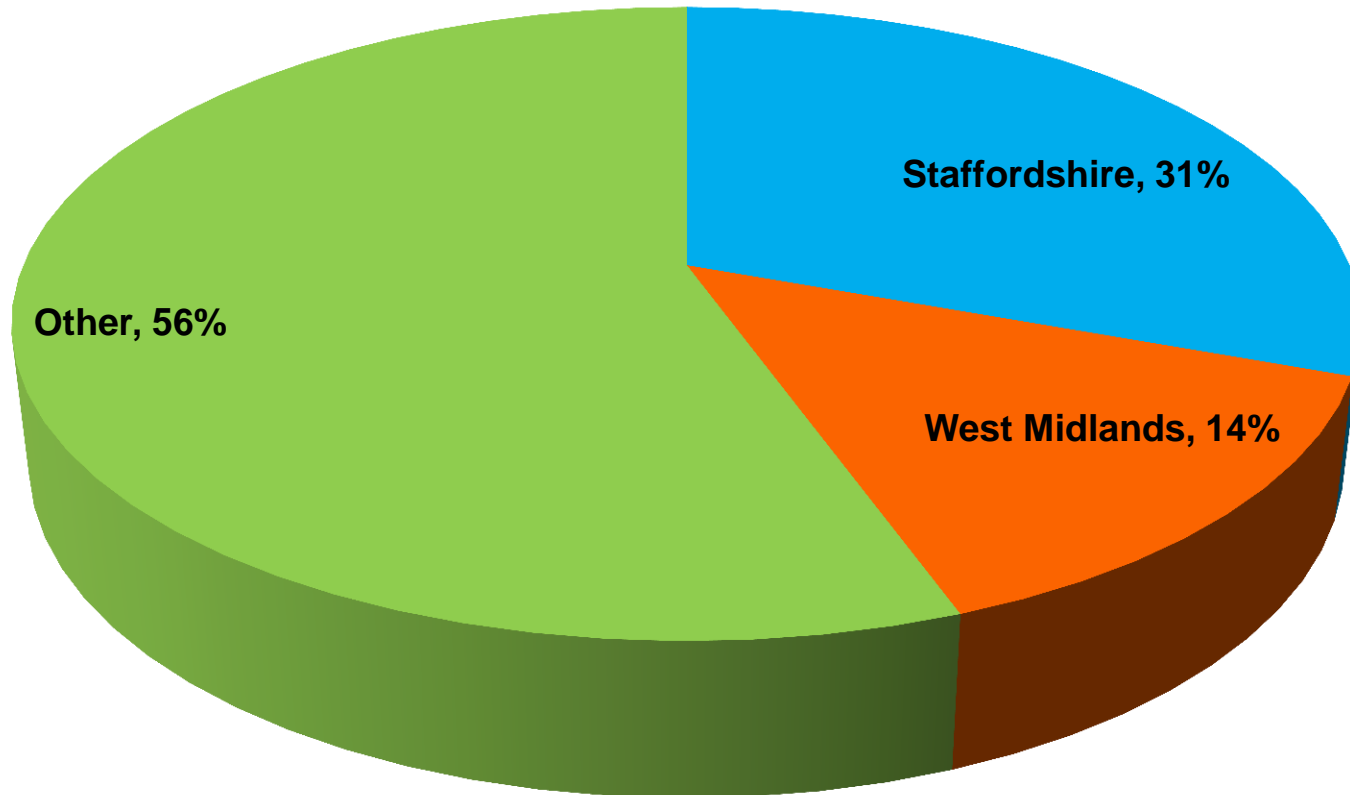


Youth bookings increased to 56%

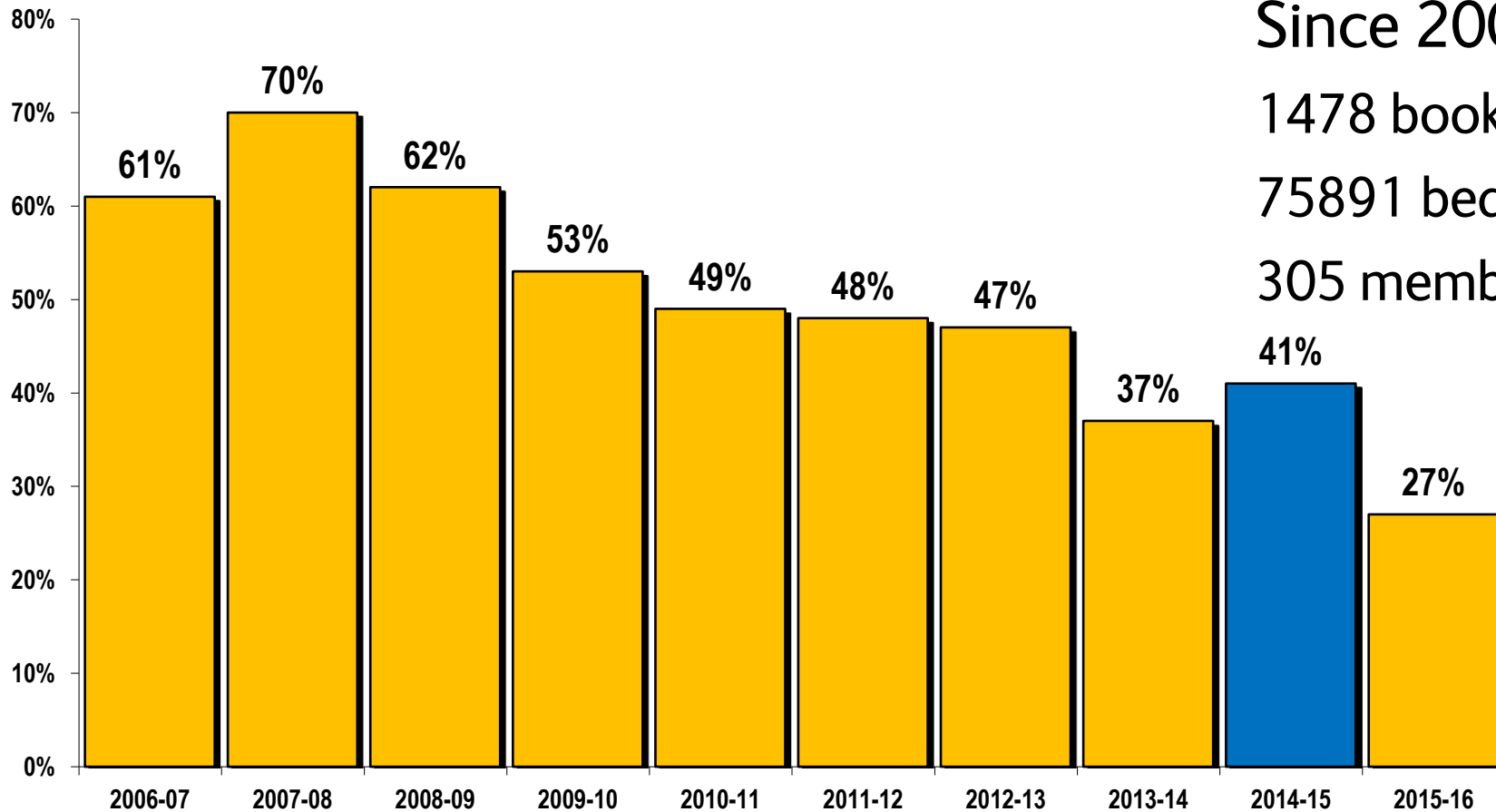


Most bookings are for Whole Centre (58% Last Year)

Membership breakdown

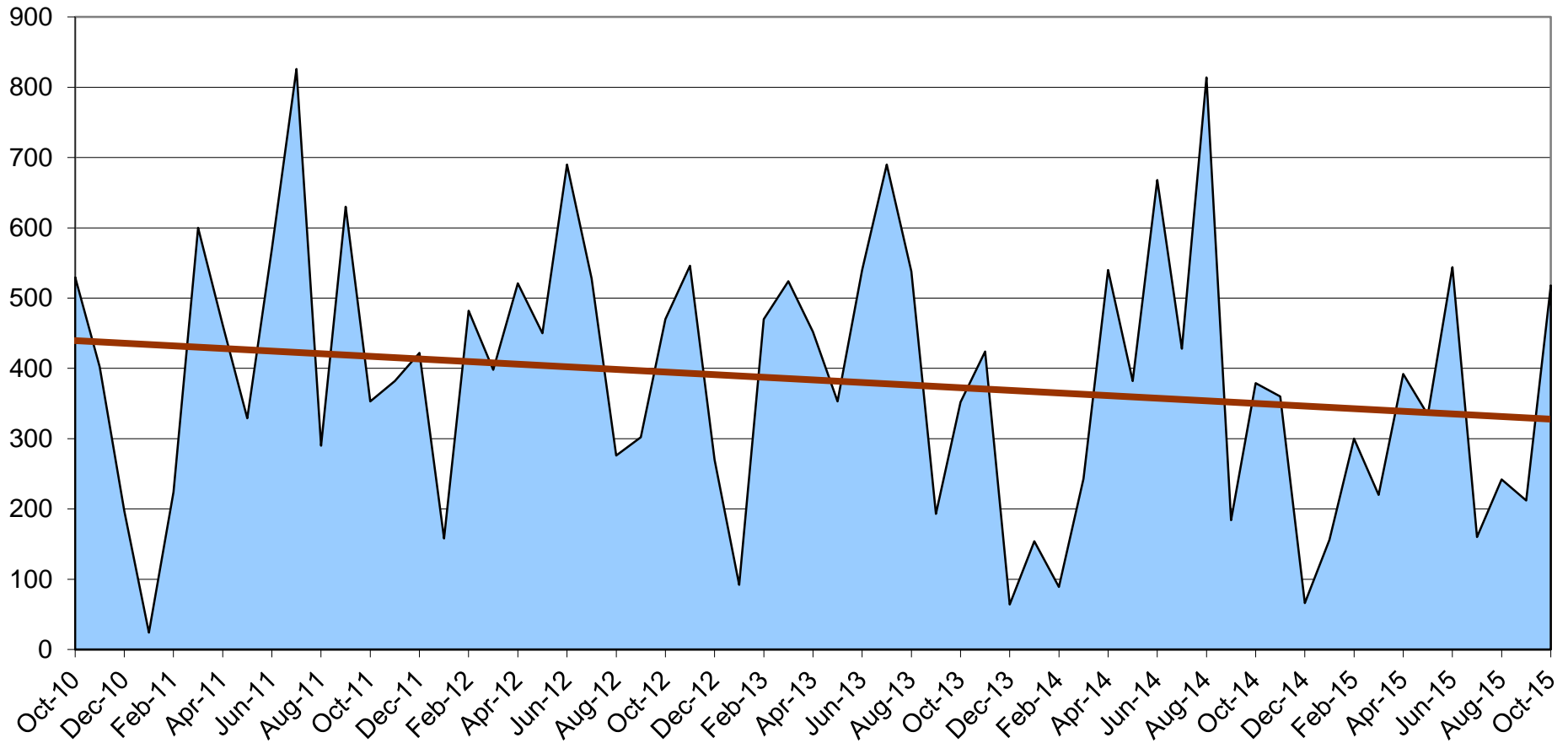


Business as at November 2015

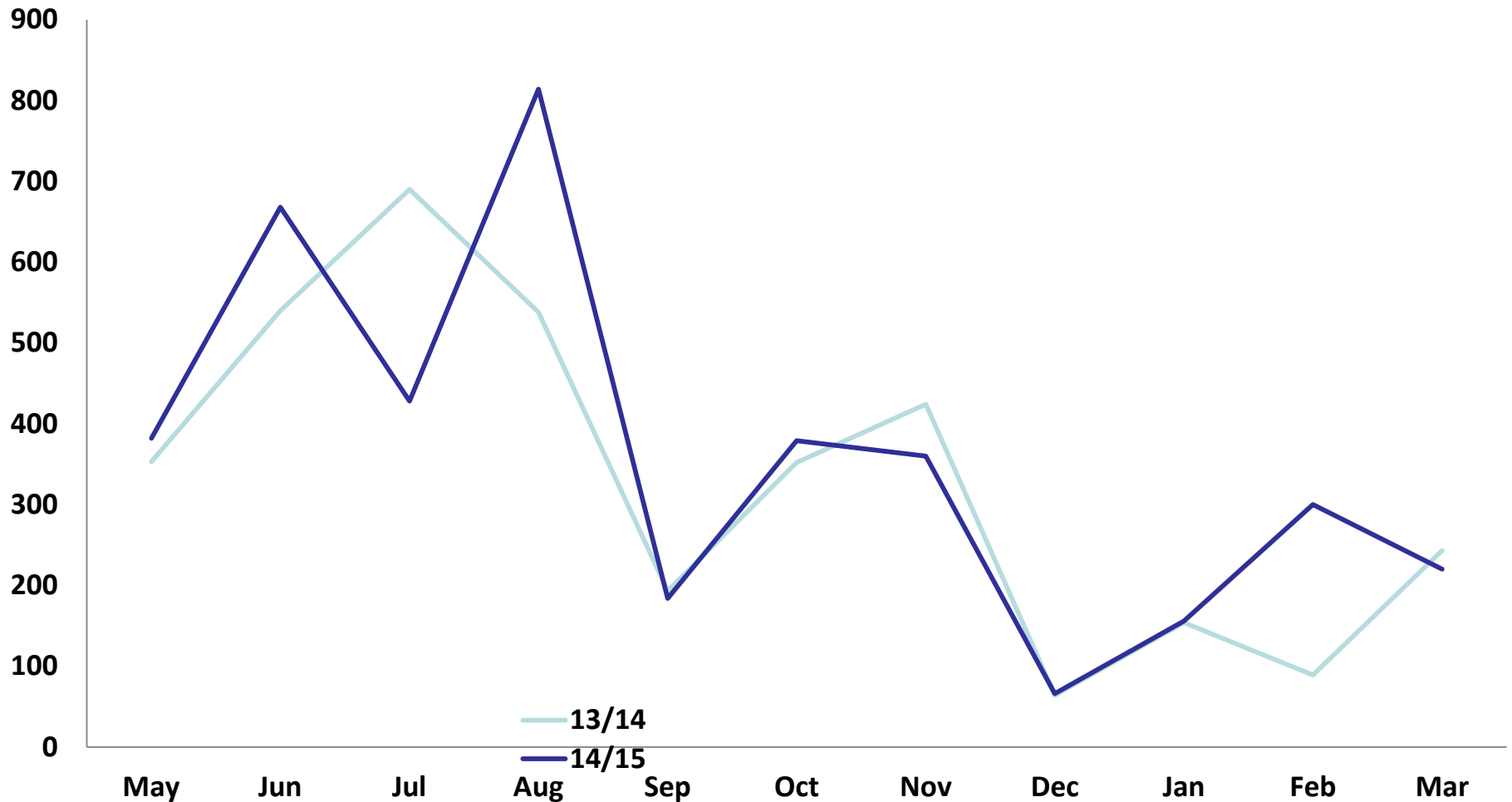


Since 2002:
1478 bookings
75891 beds sold
305 members

Current 5 year utilisation trend



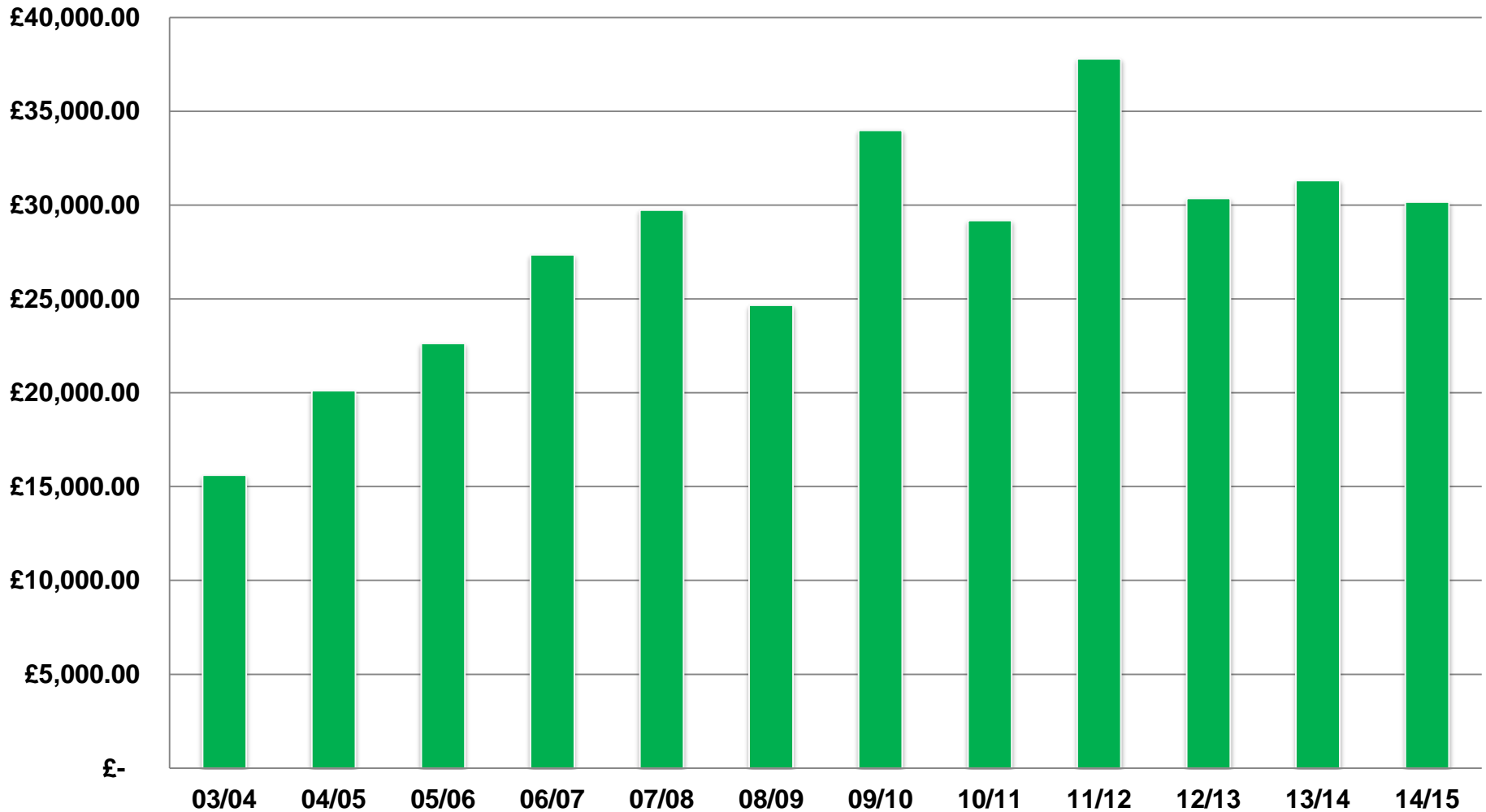
Utilisation comparison



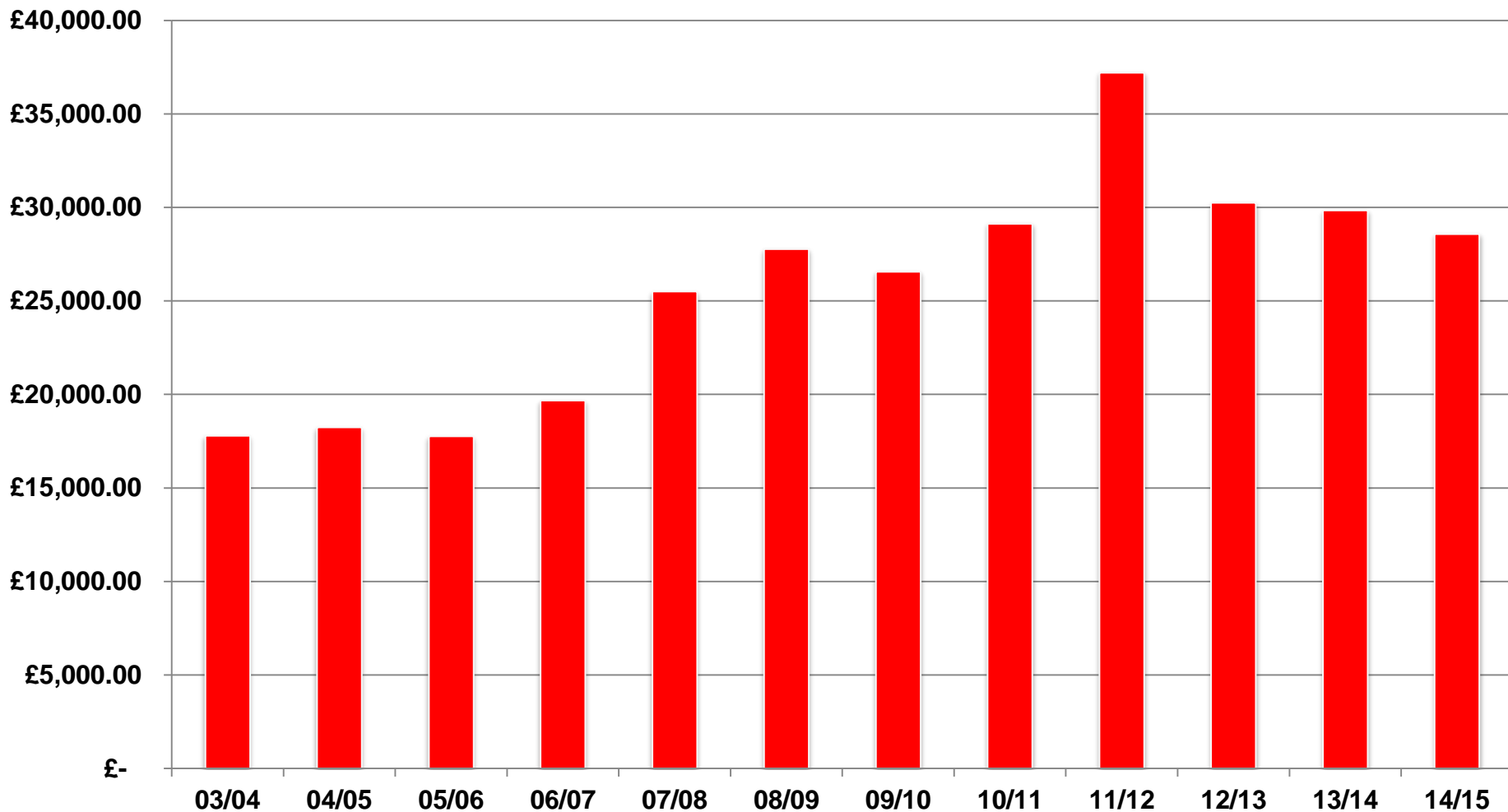
Financial summary

- £30,163 income from bookings
(decrease on last year £31,318)
- £5130 fund raising, donations or grants
- £21 from bank interest
- £28,569 administrative expenses
(decrease on last year £29,826)
- A surplus of £6,745

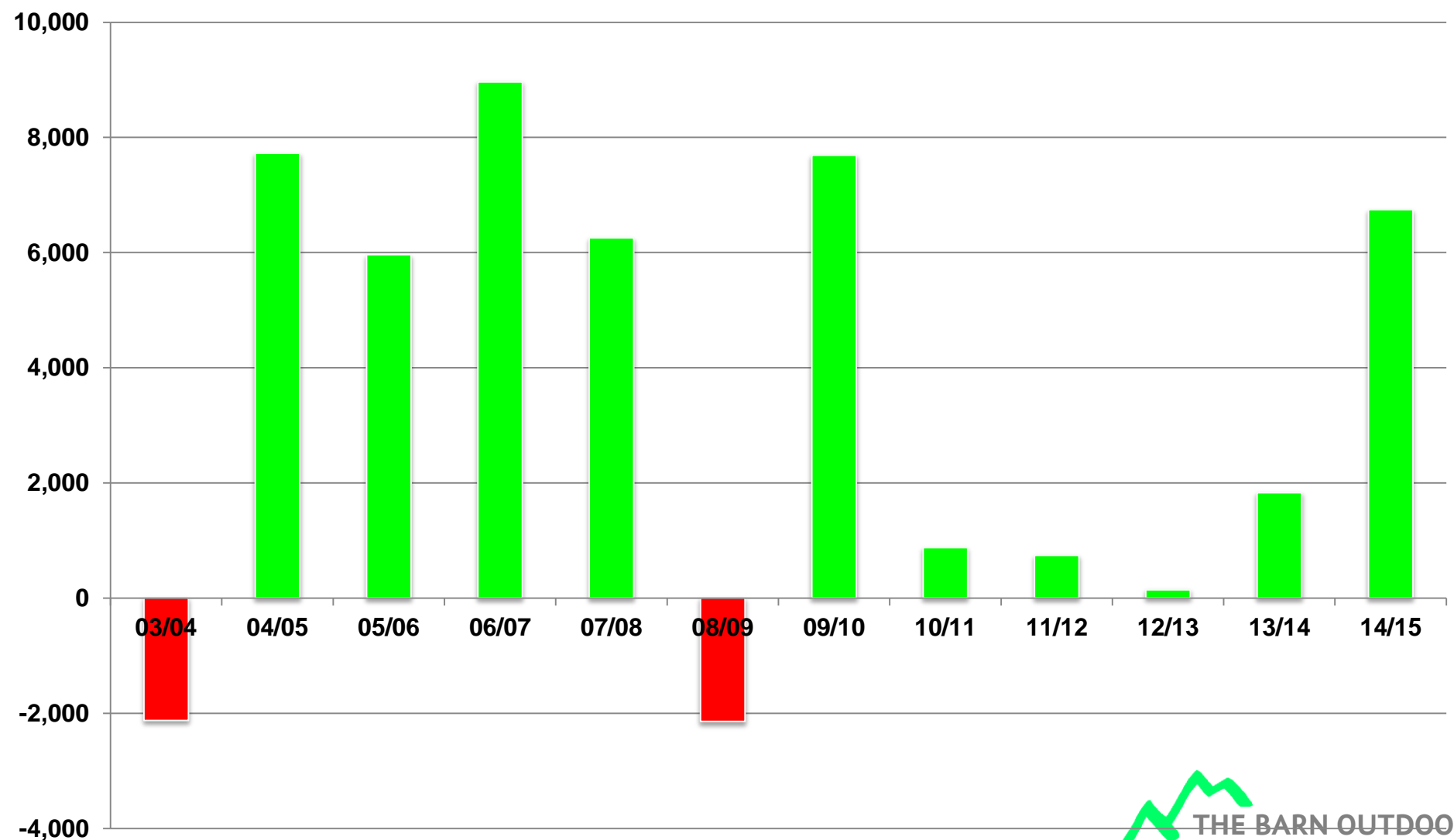
Income from bookings



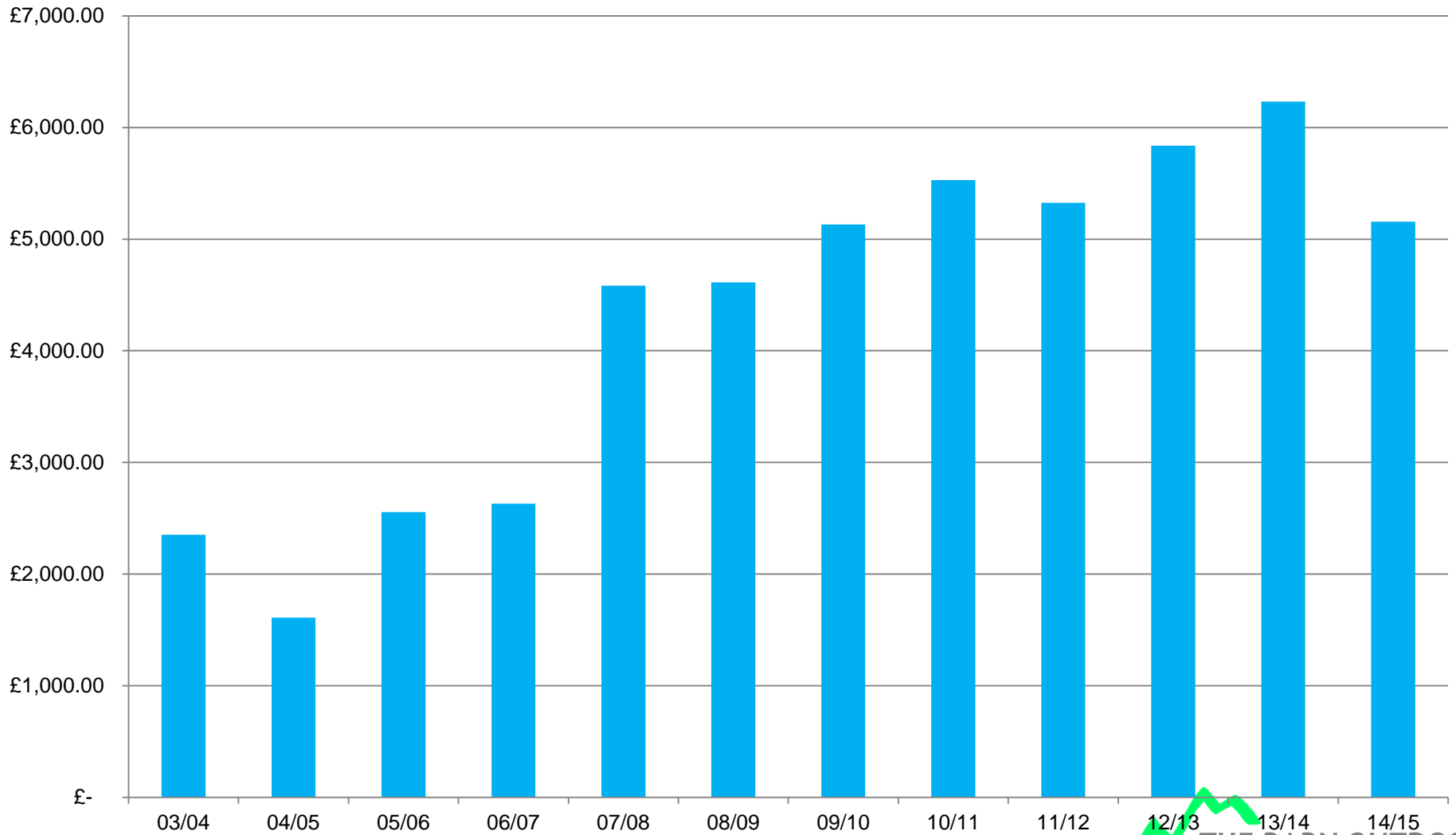
Expenses



Surplus/(Deficit) of income over expenditure



Light & heat costs



Financial summary

- Current assets £33,578
 - Creditors owed £5,920
 - Net current assets £27,658
-
- Assets remain above reserves policy of £30,000

Reserves policy

- Funds will be sufficient to
 - cover one years running costs
 - avoid necessity of realising fixed assets
- Funds will be designated to specific projects
- Some reserves will be invested
- Reserves should not fall below £30,000

Web site

- Activity increased slightly
- 3510 visits
- Approx 9.6 visits per day

Woodlands Outdoor Centre

Low cost, self catering accommodation in Betws-y-Coed

[home](#) [accommodation](#) [location](#) [prices](#) [availability](#) [bookings](#) [membership](#) [about us](#) [guestbook](#)

Welcome to Woodlands Outdoor Centre



The Woodlands Centre is an ideal base for group outdoor pursuits or activities in [Snowdonia](#). We are [located in Betws-y-Coed](#), one of [North Wales](#) foremost tourist attractions. The area is popular for trekking, canoeing, mountain biking, orienteering and rock climbing and is also convenient for the shops and travelling to the coast approximately 20 miles away. [More >](#)

The centre is a large Victorian property specially adapted into an outdoor centre to provide self catering [accommodation](#) for groups of up to 30. We have seven dormitories, a common room, games room, large kitchen, drying room, hot showers and bike sheds. [More >](#)

The centre is run by a registered charity called 'The Barn Outdoor Pursuits Association' whose aim is to:

"provide facilities enabling programmes for personal and social development of young people in Wild Country" [Learn more >](#)

We particularly welcome voluntary & LEA services, schools, Duke of Edinburgh Award, colleges and universities, uniformed organisations, those with special needs, minority groups, industrial & management training, adult rambling and outdoor activity leader training. We also accommodate adult groups.

How much?..

Prices start from £4.35 pppn for youth and £11.25 pppn for adults. Further [Discounts](#) are also available for members and groups from the Staffordshire area.

Availability..

Before making a booking we recommend that you check the availability..

Check availability for ...

Contact us..

For all enquiries please telephone The Barn Outdoor Pursuits Association on 01690 710010 or 0870 7873326 or contact us by email.

Supported by..

Book now..

How many nights do you want to stay?

1

Search our site..

Enter search text here

Management

- Stephen Pugh Resigned
- New Warden – Alan Webster
- Wardens accommodation complete
- Prices increased by 10% from April 1st
- Fire Risk Assessment completed

Management

- Employers Liability Insurance was renewed & displayed
- Improved fire safety escape route signage
- Membership fees not appropriate due to administration difficulties
- Renewed membership of SCVYS

Maintenance

- Agreed to replace cooker
- Decorated top floor
- Safety fence erected
- More fascia panels added
- New fridge and freezer facilities

Maintenance

- Fire extinguishers serviced
- Fire alarms & emergency lighting serviced
- Legionella tests performed
- PAT tests performed

Future Tasks & Improvements

- Finish replacing the fascia boards and guttering
- Convert the bike shed to games room
- Continue to apply for funding
- Strip clean and repaint the fire escape steps and walkway.

Future Tasks & Improvements

- Modernise kitchen and equipment
- Replace tired beds and bedding
- Further Investigate the feasibility of solar panels
- Continue to identify improvements in how the association is organised and run
- Continue to redecorate as and when possible
- Organise working weekends